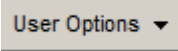
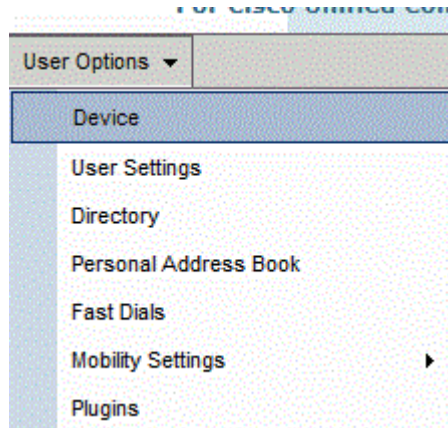


# Setting Up Speed Dials with Sidecars

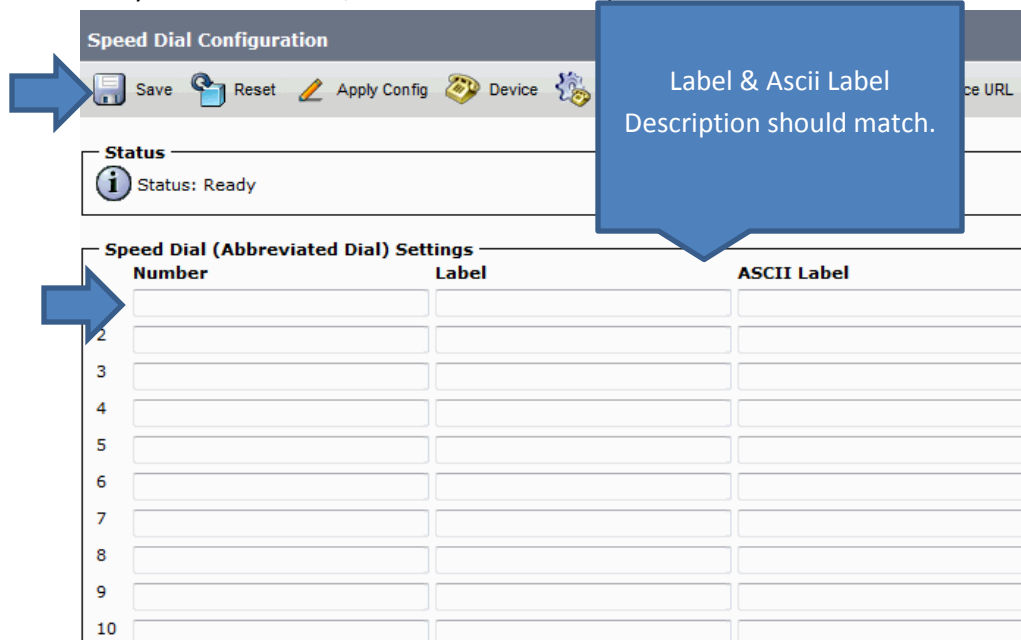
1. Open Web Browser
2. Browse to <https://10.5.1.50/ccmuser> click Yes to Proceed
3. Obtain User ID & Password from your System Administrator and/or Help Desk.
4. Click on User Options, 



5. Select Device,



6. Choose Speed Dials,
7. Edit your SPEED DIALS, Click Save when complete



**Speed Dial Configuration**

Save Reset Apply Config Device

Status: Ready

Speed Dial (Abbreviated Dial) Settings		
Number	Label	ASCII Label
1		
2		
3		
4		
5		
6		
7		
8		
9		
10		

8. Your Sidecar will light up red & reset